

Oversized Letters With Light - Manual

What Comes in the Box

- Number Base
- Side Walls
- Instructions

What Else You Will Need

- Hot/Low Temp glue gun
- Hot glue sticks

How To Assemble Mosaic Frame

Step 1: Unfold the backing of your Number/Cap



Unfold and lay out the Number/Cap base on a flat surface.

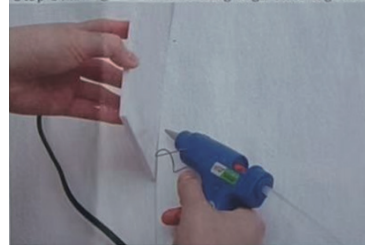
Step 2: Sort your puzzle! Unfold your side pieces & figure out where each goes



Before using any glue, pre-assemble the segments by matching the side walls to the base board.

Note : please make sure you understand the correct placement of each segment before proceeding to use the glue.

Step 3 : Hot glue the matching segments together& Attach the side panels



After matching all the side walls to the Number backing base, use glue gun to glue the matching segments of the base. Then glue the side walls along the edge of the base by following the instruction in the next page.

Step 4: Repeat Step 3 for the rest of the side wall pieces surrounding the Number base until all of them securely attached.

**Ready to fill with balloons, light
bulbs or flowers & enjoy!**

How To Fill The Number Shape With Balloons

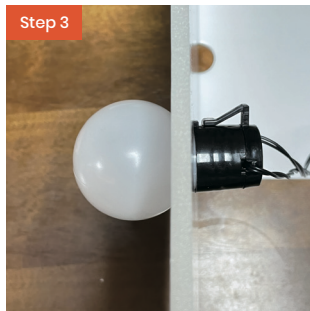
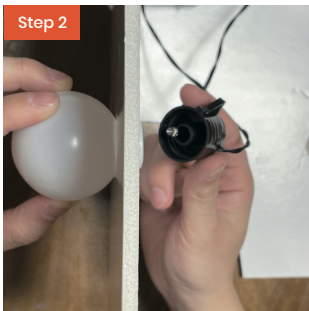
1. Lay your sculpture on a flat surface. This way, it will be easier to add all the balloons to the shape
2. Blow up balloons to your desired size - you may use a pump for faster results, we suggest to blow balloons into different sizes for a better Mosaic look.
3. Place your round balloons inside the sculpture attaching them to the foam board with the double sided tape. Keep going until the mosaic frame is full .You may place double -sided tape between balloons as well to ensure a fuller look.
4. If the sculpture has gaps, blow up more smaller balloons (depending on the size of the gap)and place them in the gap using glue dots, This almost creates a mosaic look for your mosaic frame.

How To Fill The Number Shape With Balloons

1. Lay your sculpture on a flat surface. This way, it will be easier to add all the balloons to the shape
2. Blow up balloons to your desired size - you may use a pump for faster results, we suggest to blow balloons into different sizes for a better Mosaic look.
3. Place your round balloons inside the sculpture attaching them to the foam board with the double-sided tape. Keep going until the mosaic frame is full. You may place double-sided tape between balloons as well to ensure a fuller look.
4. If the sculpture has gaps, blow up more smaller balloons (depending on the size

of the gap) and place them in the gap using glue dots. This almost creates a mosaic look for your mosaic frame.

How To Assemble The Light Bulbs Strings



step1: Please insert the lamp beads into the bulb

Step 2: Unscrew Bulb from Cap

Unscrew the bulbs from the cap, starting with the one from the beginning of the wire.

NOT where the battery box is but the other end.

Step 3: Screw Bulb back to the Cap

Then, insert the bulb through the foam board from the top, screw back on every bulb cap as you work your way down from the top. The cap needs to be at the back of the foam board sculpture when you screw the bulb from the other side into the hole.

